

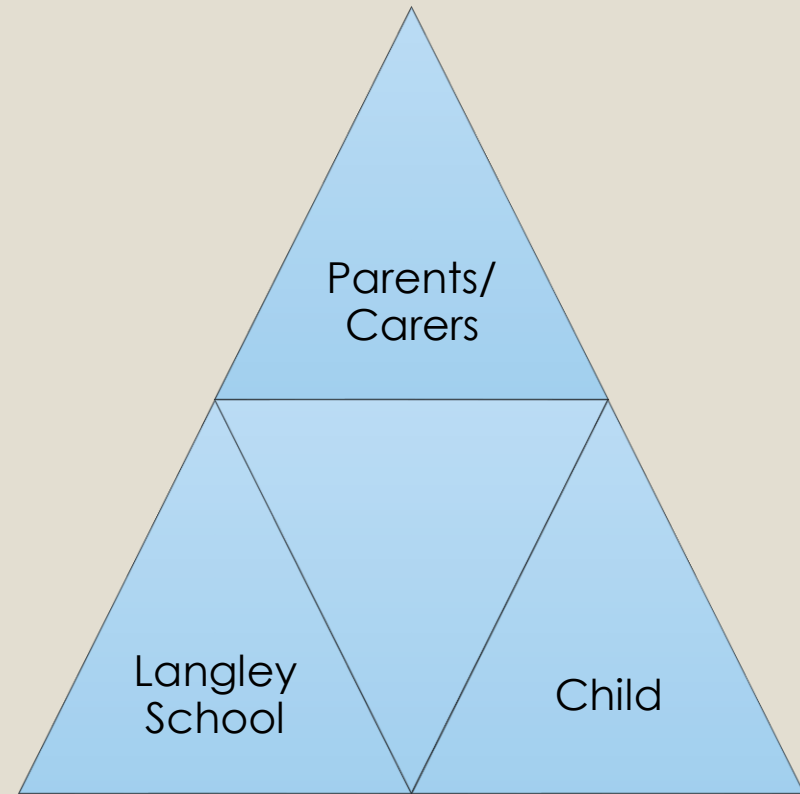


PARENT MEETING ON RELATIONSHIPS AND SEX EDUCATION 2023

Langley School Core Ethos

- We all want the best for our children.
- We want to protect and keep our children safe.
- We want the children to be healthy and happy

High quality Relationship and Sex Education is part of this



Please remember...

- Some RSE topics are sensitive, and there may be difference of opinion.
- Please ensure your comments are respectful at all times.

Aims:

- Introduction
 - What is RSE?
 - The context and purpose of RSE at Langley School
 - Aims and ethos of PSHE/ RSE
 - RSE Policy
 - Importance of Parental Engagement
- What children will be covering
- Questions and Answers
- Evaluation Forms

What is RSE?

- The Department for Education has introduced compulsory Relationship and Sex Education
- The aim of RSE is to give young people the information they need to help them develop healthy, nurturing relationships of all kinds, not just intimate relationships. It should enable them to know what a healthy relationship looks like and what makes a good friend, a good colleague and a successful marriage or other type of committed relationship.
- It should teach what is acceptable and unacceptable behaviours in relationships.
- Pupils will understand the positive effects that good relationships have on their mental wellbeing, identify when relationships are not right and understand how such situations can be managed.
- The Department for Education recommends that all primary schools have a sex education programme tailored to the age and the physical and emotional maturity of the pupils. It should ensure that both boys and girls are prepared for the changes that adolescence brings and – drawing on knowledge of the human life cycle set out in the national curriculum for science – how a baby is conceived and born.

What are the KS1 and KS2 statutory Requirements?

- The **Health Education** and **Relationships Education** aspects of PSHE (personal, social, health and economic) education are now compulsory in all primary schools.
- The statutory requirements do not extend to **sex education** at KS 1 and 2 (beyond the biological/reproductive aspects schools are already required to cover in science)
- However, the Department for Education *'continues to recommend that all primary schools should have a sex education programme tailored to the age and the physical and emotional maturity of the pupils'*
- Where schools provide sex education at key stages 1 and 2, parents have the right to withdraw their child from sex education but not from statutory Relationships Education or Health Education

Science Curriculum

- We are not required to provide sex education however as part of our Science curriculum we teach the following statutory objectives

| Year Group | |
|------------|--|
| KS1 | <ul style="list-style-type: none">• Identify, name, draw and label the basic parts of the human body and say which part of the body is associated with each sense.• Notice that animals, including humans, have offspring which grow into adults they should not be expected to understand how reproduction occurs. |
| KS2 | <ul style="list-style-type: none">• Describe the life process of reproduction in some plants and animals. They should learn about the changes experienced in puberty |

How Langley School will deliver the sessions

We have recently purchased a subscription for “Growing up with Yasmine and Tom”



- This resource covers key aspects of statutory relationships education including for example: how important friendships are in making us feel happy and secure, and how people choose and make friends. that the same principles apply to online relationships as to face-to face relationships, including the importance of respect for others online including when we are anonymous. that others' families, either in school or in the wider world, sometimes look different from their family, but that they should respect those differences and know that other children's families are also characterised by love and care

Key Stage 1 (Ages 5-7)

Lessons:

- Introduction to Yasmine & Tom
- Friendships & Feelings
- Different Families
- My brilliant body
- Keeping clean and taking care of myself
- Naming body parts
- Keeping Safe
- NSPCC PANTS rule

Lower Key Stage 2(Ages 7-9)

Lessons:

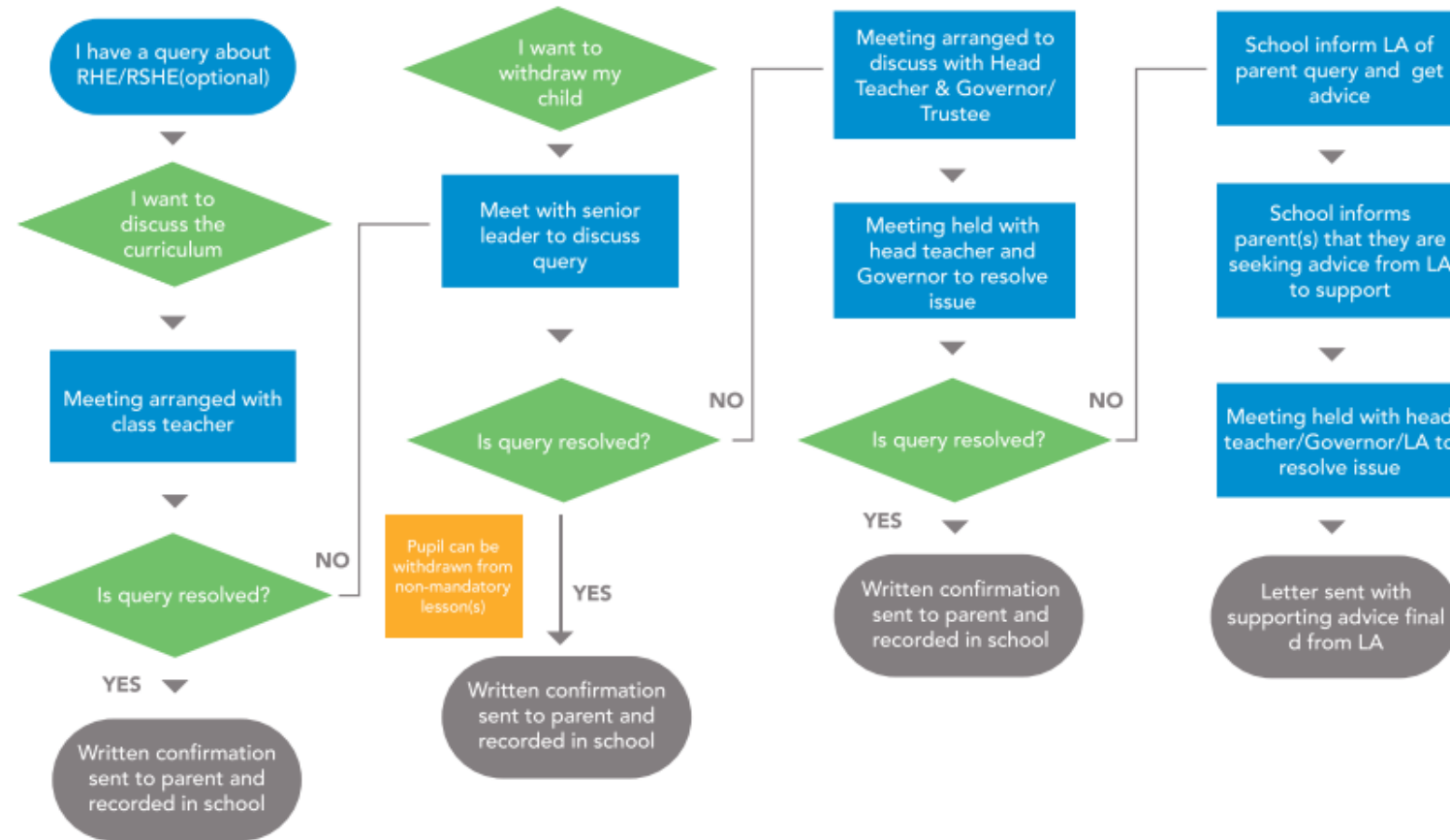
- Introduction to Yasmine & Tom
- Gender stereotypes and aspirations
- Me, Myself & I
- What makes a good friend
- Families & getting on with our families
- My personal & private body parts and keeping safe
- Body care
- NSPCC PANT Rule

Lower Key Stage 2(Ages 7-9)

Lessons:

- Introduction to Yasmine & Tom
- Friendships, secrets & pressures
- Keeping safe – safe and unsafe touch
- Changes at puberty
- Girl/ Boy talk to include menstruation and wet dreams
- Making babies *(non-mandatory lesson)
- NSPCC PANT Rule

7A. PARENT QUERY FLOWCHART FOR PARENTS



Parent Query Flowchart for Parents